



**Crawford County Agricultural
Land Preservation Program**

**Crawford County Agricultural
Land Preservation Program**

**Crawford County Conservation District
Woodcock Creek Nature Center
21742 German Road
Meadville, PA 16335**

Phone: (814) 763-5269

www.crawfordconservation.org

www.pafarmland.org

www.agriculture.state.pa.us



Program Overview

**Crawford County Agricultural
Land Preservation Program**

History

Agriculture is Crawford County's number one industry. Crawford County residents appreciate being surrounded by beautiful fields, farms, and forests, and having a land base that is capable of providing fruit, vegetables, meat, grain, and wood products for the community. Across Pennsylvania that scenario is changing. With the financial pressures on farms today, some find it easier to sell the family farm as real estate for development rather than to continue in farming. Crawford County is no stranger to this trend. Between 1987 and 1997, farm acreage went from 236,481 to 207,215, a loss of nearly 30,000 acres. During that decade, the number of farms in the county also decreased from 1,281 to 1,069. Some of the best farmland is being lost to other uses.

The Directors of the Crawford County Conservation District, listening to the concerns expressed in the community, made the establishment of a farm land preservation program in Crawford County one of their highest priorities. With the help of the Crawford County Commissioners and the Crawford County Farm Bureau, on February 5, 2004 Crawford County Commissioners Roger Williams, Morris Waid, and Jack Preston passed a resolution allowing the formation of the Crawford County Farmland Preservation Program. By December 2004, the Pennsylvania State Agricultural Land Preservation Board had formally approved the Crawford County Farmland Preservation Program making Crawford County the 55th county in the state to join the Farmland Preservation Program.

Mission Statement

The preservation of quality farmland and way of life based upon the family farm as the foundation, in a vital industry for the citizens of Crawford County past, present and future.

Board of Directors

Bob Hopkins, Chair, At-Large Member

Scott Preston, Vice Chair, Farmer

Richard Deiss, Secretary, Municipal Official

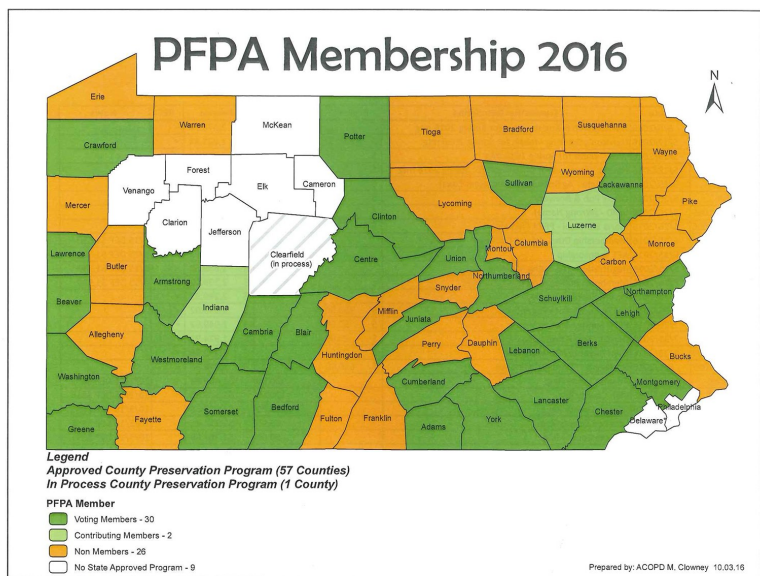
John Tautin, Treasurer, At-Large Member

Richard S. Ferguson, Local Contractor

Dennis Hindman, Farmer

Rick Rendulic, Farmer

Tracey J. Crawford, Administrator



County	2018 Allocation of Funds		
	County Approp	Total State Funds	Total State & County
Adams	\$329,679	\$702,541	\$1,032,220
Allegheny	\$0	\$1,335,490	\$1,335,490
Armstrong	\$13,666	\$102,969	\$116,635
Beaver	\$103,000	\$396,131	\$499,131
Bedford	\$2,214	\$80,010	\$82,224
Berks	\$1,090,186	\$2,397,914	\$3,488,100
Blair	\$80,000	\$302,105	\$382,105
Bradford	\$9,824	\$113,501	\$123,325
Bucks	\$2,578,693	\$3,154,730	\$5,733,423
Butler	\$150,000	\$804,715	\$954,715
Cambria	\$7,000	\$121,105	\$128,105
Carbon	\$26,421	\$146,696	\$173,117
Centre	\$112,596	\$535,861	\$648,457
Chester	\$3,600,000	\$3,491,359	\$7,091,359
Clearfield	\$0	\$73,797	\$73,797
Clinton	\$34,628	\$103,740	\$138,368
Columbia	\$19,207	\$131,870	\$151,077
Crawford	\$5,000	\$108,519	\$113,519
Cumberland	\$607,145	\$1,755,271	\$2,362,416
Dauphin	\$111,916	\$882,562	\$994,478
Erie	\$50,000	\$440,229	\$490,229
Fayette	\$38,913	\$181,757	\$220,670
Franklin	\$150,000	\$553,050	\$703,050
Fulton	\$1,614	\$25,772	\$27,386
Greene	\$5,790	\$154,669	\$160,459
Huntingdon	\$4,316	\$64,536	\$68,852
Indiana	\$10,000	\$102,217	\$112,217
Juniata	\$15,135	\$63,998	\$79,133
Lackawanna	\$60,000	\$416,420	\$476,420
Lancaster	\$1,735,653	\$3,035,472	\$4,771,124
Lawrence	\$28,185	\$139,187	\$167,371
Lebanon	\$214,778	\$644,270	\$859,048
Lehigh	\$2,231,398	\$2,917,495	\$5,148,893
Luzerne	\$2,416	\$474,837	\$477,253
Lycoming	\$56,323	\$249,445	\$305,768
Mercer	\$175,000	\$384,456	\$559,456
Mifflin	\$26,393	\$91,709	\$118,102
Monroe	\$70,000	\$533,737	\$603,737
Montgomery	\$1,196,169	\$2,790,916	\$3,987,085
Montour	\$5,132	\$50,858	\$55,990
Northampton	\$546,474	\$1,672,404	\$2,218,878
Northumberland	\$10,000	\$108,397	\$118,397
Perry	\$57,580	\$167,015	\$224,595
Pike	\$7,574	\$201,993	\$209,567
Potter	\$13,198	\$42,777	\$55,975
Schuylkill	\$102,173	\$308,177	\$410,350
Snyder	\$0	\$66,390	\$66,390
Somerset	\$1,958	\$99,937	\$101,895
Sullivan	\$10,239	\$32,041	\$42,280
Susquehanna	\$45,694	\$122,704	\$168,398
Tioga	\$78,347	\$175,753	\$254,100
Union	\$301,657	\$501,096	\$802,753
Warren	\$714.00	\$52,777.24	\$53,491.24
Washington	\$65,097.87	\$711,201.10	\$776,298.97
Wayne	\$40,503.00	\$184,918.17	\$225,421.17
Westmoreland	\$200,719.00	\$909,559.85	\$1,110,278.85
Wyoming	\$42,595.00	\$93,295.10	\$135,890.10
York	\$284,707.00	\$1,493,651.73	\$1,778,358.73
Total	\$16,767,619.74	\$37,000,000.00	\$53,767,619.74

Program Details

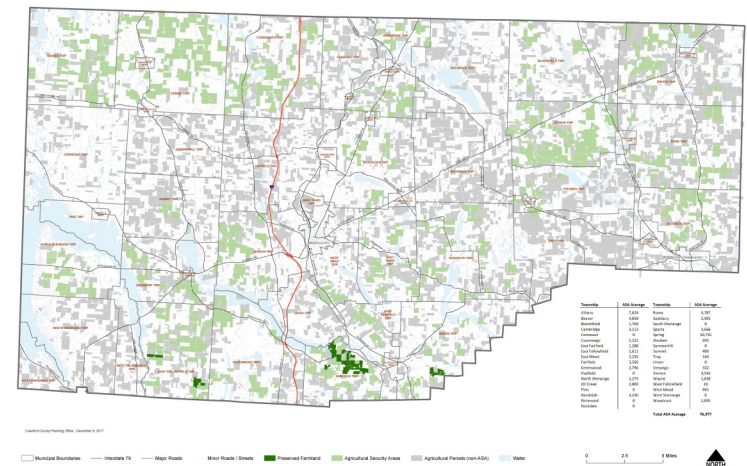
Under the program, a farmer may choose to keep his property in agriculture and receive payment for the difference between the property's value as a farm and its value for development. The farm still belongs to the farmer, and he may use the payment for whatever he wishes. An interested farmer may also choose to donate development rights to assure that his or her property remains in farming. Pennsylvania leads the nation in the number of agricultural acres saved through purchase and donation of easement rights; assuring that there will be sufficient land base to produce food and fiber locally for coming generations.

Since the program started in Crawford County, thirty five applications for easement purchases have been received. As of January 2018, five Crawford County farms encompassing 1094 acres have been preserved. A total of \$1,165,037.55 in state and county funding reached Crawford County during the process of securing these easements.

Agricultural Security Areas

Agricultural security areas are intended to promote more permanent and viable farming operations over the long term by strengthening the farming community's sense of security in land use and the right to farm. Agricultural security areas are created by local municipalities in cooperation with individual landowners who agree to collectively place at least 250 acres in an agricultural security area. Having a property in an Agricultural Security area is an eligibility requirement for the PA Farmland Preservation Program.

Crawford County Agricultural Security Areas (ASAs) 2017



**PA Department of Agriculture
Summary of Easements by County December 2017**

County	Number of Farms	Number of Acres	Purchase Price	Average Price/ Acre					
Adams	169	22,045	\$39,882,322	\$1,809	Lawrence	25	2,509	\$2,696,172	\$1,075
Allegheny	33	3,458	\$20,140,847	\$5,824	Lebanon	161	18,494	\$32,114,315	\$1,737
Armstrong	6	539	\$1,023,431	\$1,897	Lehigh	299	23,145	\$76,424,290	\$3,302
Beaver	27	2,933	\$7,908,738	\$2,697	Luzerne	28	2,906	\$8,114,477	\$2,792
Bedford	17	3,786	\$2,138,333	\$565	Lycoming	80	9,611	\$9,273,848	\$965
Berks	729	71,862	\$153,513,286	\$2,136	Mercer	55	8,777	\$7,054,668	\$804
Blair	50	7,560	\$7,779,000	\$1,029	Mifflin	23	2,559	\$2,891,468	\$1,130
Bradford	16	3,902	\$3,352,309	\$859	Monroe	114	7,774	\$23,010,545	\$2,960
Bucks	183	15,350	\$133,203,906	\$8,678	Montgomery	154	9,449	\$107,491,878	\$11,376
Butler	52	5,879	\$18,599,717	\$3,164	Montour	12	921	\$781,056	\$848
Cambria	16	2,718	\$2,946,914	\$1,084	Northampton	178	15,404	\$65,673,887	\$4,263
Carbon	21	1,556	\$3,923,850	\$2,522	Northumberland	21	2,338	\$2,912,412	\$1,246
Centre	48	7,290	\$16,284,520	\$2,234	Perry	58	9,022	\$6,488,807	\$719
Chester	327	27,804	\$155,056,323	\$5,577	Pike	2	210	\$584,164	\$2,788
Clinton	26	2,560	\$2,632,791	\$1,028	Potter	7	1,136	\$821,615	\$723
Columbia	38	4,165	\$3,957,090	\$950	Schuylkill	101	10,805	\$12,488,674	\$1,156
Crawford	5	1,094	\$1,094,494	\$1,000	Snyder	24	2,707	\$3,506,831	\$1,295
Cumberland	156	18,052	\$48,291,052	\$2,675	Somerset	12	1,617	\$2,734,070	\$1,691
Dauphin	175	16,905	\$23,556,331	\$1,393	Sullivan	8	706	\$810,957	\$1,148
Delaware	2	198	\$2,678,360	\$13,527	Susquehanna	34	6,515	\$5,705,909	\$876
Erie	68	8,406	\$14,879,264	\$1,770	Tioga	18	2,542	\$2,696,264	\$1,061
Fayette	22	2,422	\$2,757,804	\$1,139	Union	81	8,329	\$10,735,906	\$1,289
Franklin	133	17,299	\$32,634,832	\$1,886	Warren	2	310	\$294,652	\$951
Fulton	4	239	\$637,362	\$2,671	Washington	38	5,914	\$10,925,588	\$1,847
Greene	7	739	\$782,238	\$1,059	Wayne	48	5,897	\$7,460,961	\$1,265
Huntingdon	9	1,068	\$1,395,650	\$1,307	Westmoreland	97	12,814	\$26,972,152	\$2,105
Indiana	9	932	\$1,725,940	\$1,852	Wyoming	11	1,793	\$1,977,615	\$1,103
Juniata	20	2,590	\$1,829,157	\$706	York	277	41,636	\$75,113,860	\$1,804
Lackawanna	63	5,055	\$9,036,116	\$1,788	Grand Total	5,242	544,892	1,403,630,648	\$2,576
Lancaster	843	70,651	\$182,231,635	\$2,579					