

# ABOUT OUR SPEAKERS & PRESENTERS



**Thomas Hylton**

Thomas Hylton, a Pulitzer Prize-winning journalist, is author of a color coffee table book called *Save Our Land, Save Our Towns*. The book is a plea for comprehensive planning to save our cities, towns, and countryside.

Hylton is also host of an hour-long public television documentary called *Save Our Land, Save Our Towns*. The program has been broadcast prime time on all Pennsylvania PBS stations and has aired on more than 100 PBS stations nationwide.

As president of *Save Our Land, Save Our Towns Inc.*, a non-profit corporation, Hylton serves as an advocate of traditional towns that house people of all ages, races, and incomes.

Since publication of the book, Hylton has given 450 presentations in Pennsylvania and 34 other states on land use planning and community building. He has addressed the nation's governors at the annual conference of the National Governors' Association in Washington. He has given talks to legislators sponsored by both the Democratic and Republican caucuses of the Pennsylvania House and Senate.

Hylton is an organizing member of 10,000 Friends of Pennsylvania, a coalition of civic

groups dedicated to land use reforms and community building in Pennsylvania.

A three-time winner of the American Planning Association's annual journalism award, Hylton received a fellowship from the Society of Professional Journalists in 1993 to study state planning issues.

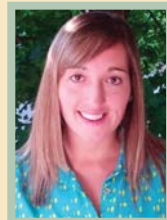
A native of Wyomissing, Pennsylvania, Hylton has lived all his life in Pennsylvania cities and towns. Since 1973, Hylton has lived in Pottstown with his wife, Frances, who retired in 2008 after teaching in Pottstown elementary schools for 35 years. For 22 years, Hylton wrote for Pottstown's daily newspaper, *The Mercury*. His editorials advocating the preservation of farmland and open space in southeastern Pennsylvania won a Pulitzer Prize in 1990.

Hylton conceived and organized *Trees Inc.*, a non-profit corporation that raised nearly \$500,000 to plant and maintain street trees in Pottstown. He co-founded *Preservation Pottstown*, an organization dedicated to preserving Pottstown's historic neighborhoods and enhancing the borough's quality of life. He helped bring about the integration of Pottstown's elementary schools through a special edition of *The Mercury* advocating the cause.

Hylton is a member of the Pottstown School Board. He previously served 12 years as chairman of the Pottstown Planning Commission and 15 years as chairman of the Pottstown Shade Tree Commission. In 2003, Pottstown Council adopted an innovative "user-friendly" zoning ordinance Hylton wrote with a grant from the William Penn Foundation.



**Dave Washousky**  
Program Director  
French Creek Valley Conservancy



**Arlene Rodriguez**  
Crawford County Planning  
Commission, Assistant Planning  
Director

## CRAWFORD COUNTY COMMISSIONERS



**Jack Lynch**



**C. Sherman Allen**



**Francis F. Weiderspahn Jr.**



### Apple Shamrock Farm

In Crawford County, PA is owned and operated by Rob, Chris and Josh Waddell. The 2,000 acre farm consists of 1200 dairy cows milked in a double 20 parlor and housed on sand beds. Although cow comfort is a top priority, plenty of attention is also given to good breeding and sound environmental practices. In addition to the existing well planned facilities, a new free stall and manure handling facility are under construction. This is a great opportunity to visit a leader in the dairy industry.



### Ernst Conservation Seeds

Grows, processes and sells over 400 species of native and naturalized seeds and live plant materials for restoration, beautification, reclamation and conservation. In addition to 8,000 acres of native seed production at Ernst, they supply seed from some of North America's top producers and collectors. Ernst Conservation Seeds and its suppliers collect, grow and process all of their products in an ecologically sustainable and renewable manner. [www.ernstseed.com](http://www.ernstseed.com)



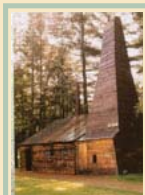
### Pymatuning Spillway

It's known to the world as, "Where the Ducks Walk on the Fish" ...and they do! 1,000's of carp in one small place. Local businesses sell \$1.00 loaves of stale bread to feed the carp with. You will have no problem understanding the term "feeding frenzy" when you toss a loaf in. The Spillway is the second most popular tourist destination in all of Pennsylvania, trailing only the Liberty Bell. [www.pymatuning-state-park.org](http://www.pymatuning-state-park.org)



### Riverside Inn

Was built in the late-1880s at the height of the mineral springs craze in the United States, it was operated as a resort for vacationers heading to the nearby springs that gave Cambridge Springs its name. The Riverside Inn was the first of many resorts to be built in and the only one that remains from that period. It was listed on the National Register of Historic Places in 1978. [www.theriversideinn.com](http://www.theriversideinn.com)



### Drake Well

Is a museum that interprets the birth of the American oil industry in 1859 by "Colonel" Edwin Drake along the banks of Oil Creek in Cherrytree Township, Venango County. The museum collects and preserves related artifacts. The reconstructed Drake Well demonstrates the first practical use of salt drilling techniques for the extraction of petroleum through an oil well. A historic site, the museum is accredited by the American Alliance of Museums. [www.drakewell.org](http://www.drakewell.org)

TUESDAY  
SEPTEMBER 30, 2014

WEDNESDAY  
OCTOBER 1, 2014

THURSDAY  
OCTOBER 2, 2014

Pennsylvania Farmland  
Preservation Association

Crawford County Agricultural  
Land Preservation Board

American  
Farmland Trust

★ 2014 ★

PENNSYLVANIA FARMLAND PRESERVATION ASSOCIATION

# FALL CONFERENCE

★ Registration Guide ★

INVESTING IN THE FUTURE OF AGRICULTURE

"Planning for Preservation"

RIVERSIDE INN • 1 FOUNTAIN ST., CAMBRIDGE SPRINGS • CRAWFORD COUNTY, PA